

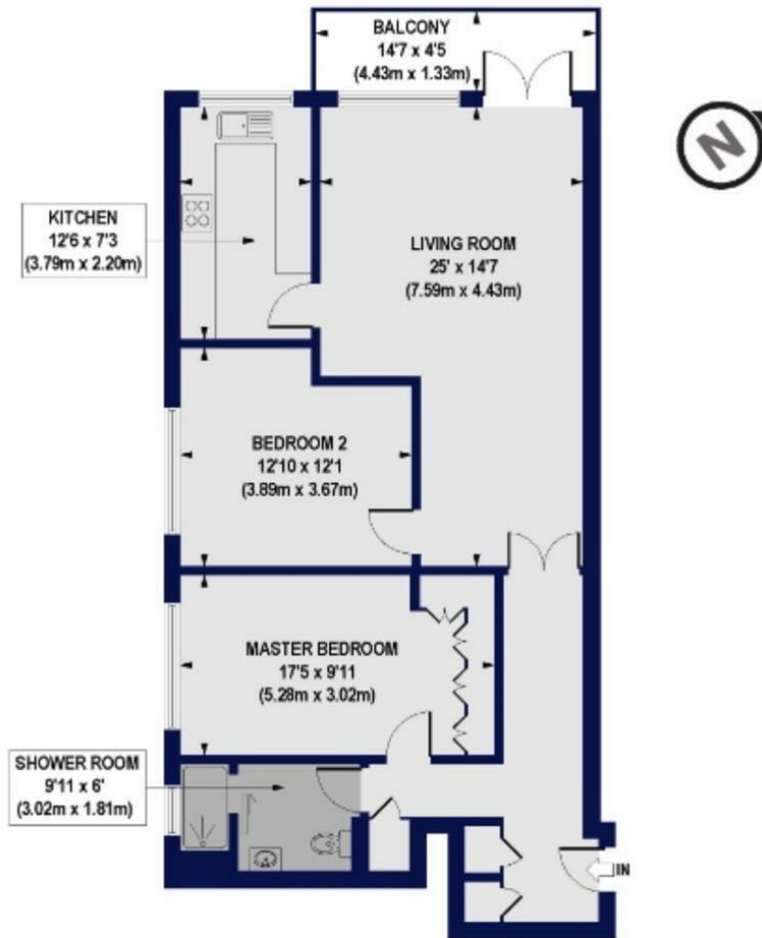


hausman
& holmes

Embassy Lodge, N3

Offers In Excess Of £435,000

Embassy Lodge, Regents Park Road, N3
 Approx. Gross Internal Floor Area 948 sq. ft / 88.05 sq. m

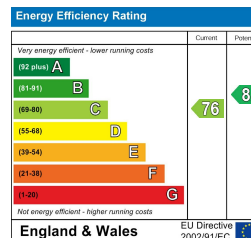


- Share of Freehold
- Communal Gardens
- Within the Eruv

- Chain Free
- Residents Park & Porter
- Cash buyers only



020 8458 8555
 57 Golders Green Road
 London NW11
 info@hausmanandholmes.com



Compliant with RICS code of measuring practice, Particulars and floor plans are only a guide to the property and do not constitute or form part of any offer or contract and are not to be regarded as representation of fact. Any intending purchaser must satisfy themselves as to the accuracy of these particulars as they are given without responsibility. No person in the employment of Hausman and Holmes has any authority to make or give representation or warranty to properties being sold.